

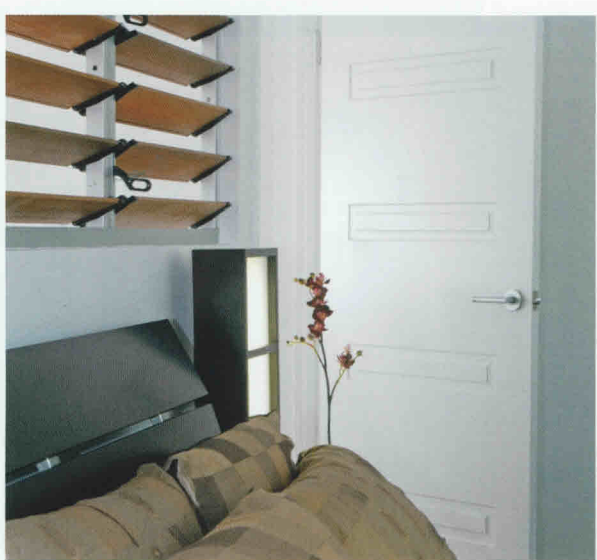
HUMECRAFT INTERIOR



Premium internal doors in a selection of classic and modern designs. Solid construction with patterns deep square corner routed into each door face with primed MDF faces as standard or the option of furniture grade sliced pacific maple veneer for staining. Available in 2040 and 2340mm door heights.



SORRENTO INTERIOR



Beautiful doors with modern rout designs into both primed faces. Doors feature 6mm faces and polyurethane core for strength and additional acoustic qualities. Supplied as 2040 and 2340mm high doors. Insist on matching bi-fold doors and smartrobes to complete the look.



LINEAR 200 SERIES

A stunning range of minimalist look doors to complement the Linear 100 Series (entrance doors).

Solid construction HLR210, HLR220. Honeycomb core HLR230. Primed MDF faces standard with rout both sides. Not suitable as rebated pairs, consider mushroom stop.



Detail of Linear Clear Bevel



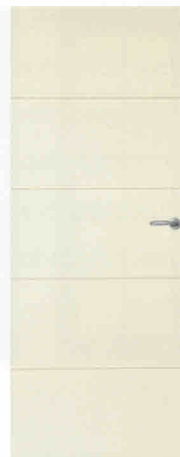
HLR210
Linear Frost



HLR210
Linear Clear Bevel



HLR220
Linear Clear



HLR230

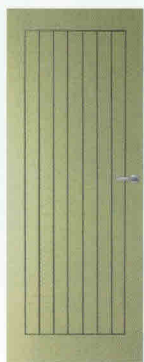
ACCENT



HAG9



HAG11



HAG12



HAG14



HAG18



HA5



HA10



HA40



HA45

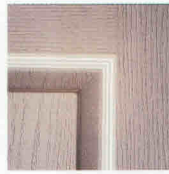


Unique shallow rout modern designs routed into both primed MDF faces. Available in both 2040 and 2340mm high doors in all popular widths. Check your stockist for made to order sizes. These doors feature the exclusive Hume high density cellular core. Matching bi-folds also available as well as smartrobes.

MOULDED PANEL INTERIOR

Without question the most extensive range of door designs in Australia. Door faces feature embossed moulded panel designs in woodgrain or smooth depending on model. The look of joinery doors at a fraction of the cost and with matching bi-fold and robe doors to complete the fitout.

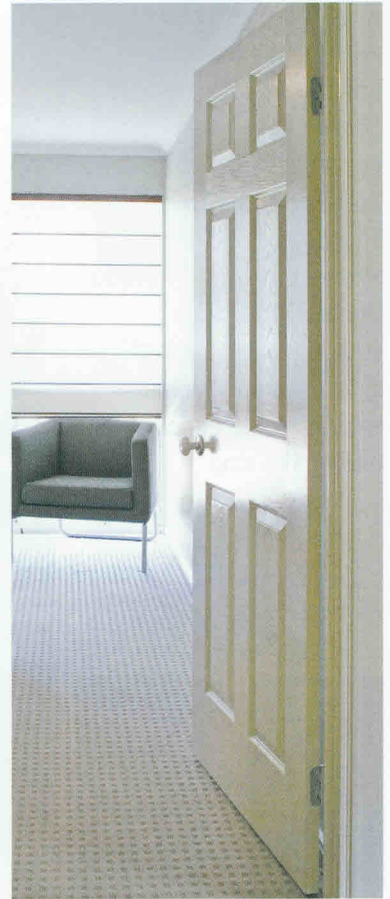
SKIN OPTIONS



WOODGRAIN SKIN
 Oakfield
 Pacific
 Vienna
 Chateau
 Caprice
 Denmark



SMOOTH SKIN
 Ascot
 Hayman
 Alpine



OAKFIELD



OAK



BF18



OAK-G
Panama



BF19
Panama

CAPRICE



CAP



BF34

PACIFIC



PAC



BF15

DENMARK



DEN



BF26

CHATEAU



CHA



BF33

VIENNA



VIE



BF25

ASCOT SMOOTH



ASC



BF27



ASC-G
Panama



BF28
Frosted Rosebud



ASC
2340mm high

HAYMAN SMOOTH



HAY



BF6

ALPINE SMOOTH



ALP



ALP
2340mm high

LINCOLN/JOINERY

Internal engineered joinery doors with laminated timber veneered stiles and rails. Fielded panels feature veneered MDF to avoid splitting which may occur in solid timber. Ready to stain or paint.



LIN1

LIN2

LIN3

LIN10

FLUSH – BI-FOLD

Superior doors with unique high density honeycomb core construction or solid versions to minimise noise and add that touch of class. Bi-fold and multi-fold options available as well as made to order options in a vast range of sizes.



PC MDF

BF1 PC MDF

SLICED PACIFIC
MAPLE

BF1 SPM

COMMERCIAL
PC MDF
(6mm skins honeycomb
core)

SOLICORE
Timber frame with
water resistant particle
board core.
Variety face materials

SOLID CORE
Pine block core.
Variety face materials.

CAVITY UNITS



To utilise the space normally taken up by a hinged door we offer cavity door units allowing the door to slide into a pocket in the wall.

Choose from the budget Ezi Slide unit using a jump free J track and single ball bearing wheels, or the premium Statesman Cavity featuring U track and 4 wheel ball bearing assemblies for a smooth trouble free door operation and the benefit of the same architrave head height as hinged doors.

EZI SLIDE CAVITY

- Smooth J track operation
- Load capacity 35kg
- Single wheel ball bearing assemblies
- Door not required to be grooved



EZI SLIDE (STD)
WHEEL ASSEMBLY

STATESMAN CAVITY

- Smooth U track operation
- Load capacity 70kg
- Four wheel ball bearing assemblies
- Same head height as a hinged door
- Quick release mechanism to remove door



STATESMAN
WHEEL ASSEMBLY